

# Bachelor in Management (BSc)

## Fact sheet

Edition 2026-2027



# ESCP

## Business School

---

Established in 1819, ESCP is widely recognised as one of the first business schools in history. Its mission is to develop the next generation of transnational business leaders, preparing them to embrace the opportunities offered by cultural diversity.

Founded in Paris, the school helped shape European identity and continues to be a promoter of innovation and research in a variety of fields.

As well as a rich heritage, ESCP is also multi-accredited with national and international awards and certifications including EQUIS, AACSB, EFMD MBA, EFMD EMBA, and 6 European Higher Education accreditations.

With its six urban campuses in **Berlin, London, Madrid, Paris, Turin, and Warsaw**, ESCP's true European Identity enables the provision of a unique style of cross-cultural business education and a global perspective on international management issues.

Our students make up a group of rare cultural diversity, representing over 90 different countries.

## PROGRAMME

### Bachelor in Management (BSc)

#### *General information :*

<https://escp.eu/programmes/bachelor-in-management-BSc>

Each undergraduate student at ESCP studies for **3 years, in 3 European countries**, to get the BSc degree in Management. The curriculum of the programme includes 3 years (= 6 semesters) organized between the European campuses of ESCP Business School, the same core courses being taught on the different campuses.

#### **Languages of instruction**

All the courses offered to international exchange students are taught in English. The required level is C1 ( 6.5 IELTS / TOEFL IBT 90 / CAE 180).

#### **Pedagogy**

Innovative teaching, based on a blended learning model including case studies, group projects, workshops, lectures provided by faculty and executives from ESCP's corporate partners.

#### **Exams**

Final exams are held during a specific exam week. The assessments might include: essays, in-class presentations, written quizzes and examinations, and group projects.

# Academic calendar

## FALL SEMESTER

- 31 August – 18 December 2026 ..... Classes  
(including induction and final exams week)

## SPRING SEMESTER

- 4 January – 9 April 2027 ..... Classes  
(including induction and final exams week)

- 3 – 9 June 2027 ..... Spring Semester resit exams:

## NOMINATION DEADLINES

Fall semester

17 April

Spring semester

16 October

## STUDENT APPLICATION DEADLINES

Fall semester

30 April

Spring semester

30 October

# Exchange student applications

---

## APPLICATION REQUIREMENTS.

As exchange students will integrate our Bachelor in Management programme, they will be studying with local and international students who are generally 18 to 22 years old. We would advise you to nominate students who are between the ages of 18 and 24.

**After the official nomination, students will receive instructions for their online registration, and additional information about their exchange programme, contacts, and logistics.**

## SUPPORTING DOCUMENTS REQUIRED FOR APPLICATION

- Transcripts of previous years at university
- Copy of passport or national ID card
- Profile picture used for digital student card



# Class rules

## The evaluation

---

### **CLASS ATTENDANCE**

**is strictly mandatory.**

Students are allowed up to 3 missed lecture for 36-hour core course and up to 2 missed lectures for a 24-hour elective. After that, in principle, the student is not accepted the course.

**Note that no course can be dropped after the session has already started.**

### **CREDIT SYSTEM/WORKLOAD**

The credits received in the Bachelor are in accordance with the **European Transfer Credit system (ECTS)**, based on students' workloads, i.e. including face-to-face course attendance and personal work.

The workload per semester is 30 ECTS, with a combination of 36-hour (6 ECTS cr.) and 24-hour (3 ECTS cr.) courses (excluding language classes).

### **RESULTS, TRANSCRIPTS OF GRADES**

Students can see their results online (after completing a short evaluation survey for each course) and download their official transcripts of grades from the intranet portal. Students' academic performance is evaluated according to a grade point scale out of 20.

### **ESCP Grading (out of 20) and GPA**

Each semester, the student GPA is updated based on the following calculation, for validated courses only: average of the final grades (local grading / 20), weighted by the ECTS credit value of each course.

### **ESCP PERCENTILE**

Each semester, students are ranked for each course ,on each campus ,based on the following percentile calculation:

$$\left[ \frac{\text{number of students registered in the course} - \text{ranking based on the final grade}}{\text{number of students registered in the course}} \right] * 100$$
 The student with the highest record will get 100, and the student with the lowest record will get 0..

# Practical information

---

## FEES

No tuition/registration fees for visiting exchange students.

## STUDENT SERVICES

<https://www.escp.eu/student-services>

**On each campus, a Students Services Team is dedicated to helping students with the practical aspects of their stay.**

Upon registration, the students receive their credentials (email addresses, logins, PWs), which they can use to access the “Campus life” platform.

## HOUSING

**ESCP has no accommodation on campus.** However, thousands of accommodations from private owners, residence halls, real estate agencies, or rooms in private homes, are available close to the school. We are here to help you find housing near our campuses.

### Students can :

- Access a list of student residences
- Use the housing section of the **Campus life platform** to find local accommodation solutions.
- Contact ESCP staff to get advice on where to live in the city you will be studying in
- Attend the ESCP housing webinars of the campus you will be visiting.

## HEALTH INSURANCE

Students will be asked to show proof of insurance, covering them for civil liability risks, repatriation assistance, individual accidents and medical costs abroad. It is **mandatory** for all students.



## VISA INFORMATION

**EU citizens do not need a visa to travel to ESCP campuses, except for London.**

**For non-EU citizens, and for non-UK citizens :**

On each ESCP campus, the Students Services team is able to help and guide you with your visa and residence permit application process from start to finish.

Note: always refer to the country of destination's government website for official and updated information.

**On each campus, Student Affairs officers are available to assist you with your visa application, if needed. They can be contacted via email after you complete your application to your assigned campus.**

# Our Campuses

---

## *Academic offer for incoming exchange students*

International exchange students can choose from a range of courses offered during **the third year of the BSc programme, covering both Semester 5 (Fall) and Semester 6 (Spring)**.

Please note that course availability and **the number of ECTS credits may vary depending on the campus**. We therefore encourage you to consult the detailed course lists for each location.

### **FALL SEMESTER 2026**

BERLIN CAMPUS  
LONDON CAMPUS  
MADRID CAMPUS  
TURIN CAMPUS

### **SPRING SEMESTER 2027**

PARIS CAMPUS -> **Special International Business Track**  
LONDON CAMPUS  
MADRID CAMPUS  
TURIN CAMPUS

**For further information about each campus:  
<https://escp.eu/blog-bachelor/campuses>**

# Our Campuses

---

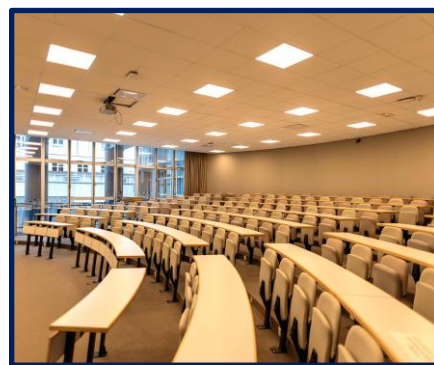
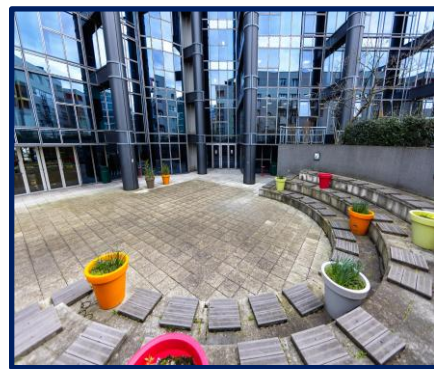
## PARIS CAMPUS

Located in the north-western part of Paris, the Champerret campus offers students the opportunity to study in one of the world's most vibrant cultural and economic capitals.

The campus is ideally situated close to iconic landmarks such as the Champs-Élysées and the Arc de Triomphe, as well as the green spaces of the Bois de Boulogne. The lively neighborhood of Batignolles, known for its cafés, restaurants and local atmosphere, is also nearby.

Just a short distance away, La Défense—Europe's largest business district—offers a dynamic professional environment with numerous multinational companies.

Well connected by metro, buses and regional transport, the campus provides easy access to central Paris and its countless cultural, historical, and professional opportunities.



# Study International Business in Paris

The major in **International Business** offered by ESCP Business School on the Paris campus is designed to give students in-depth knowledge, skills and networks that are essential in today's globalised work environment. Students from ESCP Business School will mix with top students from our partner business schools around the world, providing excellent opportunities for learning in a multicultural setting.



## FOUR IB MODULES

### Managing in an International Context

Designed for students who will work in multinational organisations or who will take on international development responsibilities, this course has a strong focus on the intercultural dimension of business. It includes a serious learning game on intercultural management, which is complemented by role plays, discussions, debates and company case studies. The goal of the course is to develop students' intercultural and managerial skills.

### International Operations Management

Boundary spanning managers need to manage trade-offs and work with marketing and R&D functions to deliver cost efficient and responsive products and services. However, the global nature of operations means that both opportunities and risks need to be managed to remain competitive. The course will cover this scope and reflect on the implications of new technologies, such as AI and blockchain, as well as geopolitical shifts and resource scarcity.

When? During the third year of the undergraduate programme for ESCP students and during the spring term of the third year for exchange students (January to April).

### International Luxury Marketing

This course analyses the major transformations that occurred when many of the European luxury brands or Maisons were acquired by large corporations and pursued strategies of diversification and global expansion. While highlighting the strategic opportunities created by growth, globalization, and brand extension, the course also critically assesses the tensions and limitations that the luxury industry faces today.

### Theory of the Multinational Firm

This course examines the multinational enterprise through the lenses of internalization theory and transaction costs, identifying the determinants of firm-specific and location-specific factors that shape international production. Taking a strategic approach, students will explore the way in which managers make entry mode decisions using case studies of firm internationalization.

**How does it work?** ESCP students take the four IB modules above, each worth 6 ECTS or 3 credits, which concentrates their electives in the spring term. Exchange students also take the four IB modules, with those who require additional credits taking one or more electives, including language courses.

# PARIS CAMPUS B3, Spring 2027

## UP TO 30 ECTS CREDITS

You may combine up to 4 International Business electives (6 ECTS each) + Management elective (3 ECTS)  
+ Language course (1.5 ECTS) + Business Game (1.5 ECTS)

S6	<b>IB Elective</b>	<i>International Business</i>	<b>Managing in an International Context</b>	36 hrs	6
S6	<b>IB Elective</b>	<i>International Business</i>	<b>International Operations Management</b>	36 hrs	6
S6	<b>IB Elective</b>	<i>International Business</i>	<b>International Luxury Marketing</b>	36 hrs	6
S6	<b>IB Elective</b>	<i>International Business</i>	<b>Theory of the Multinational Firm</b>	36 hrs	6
S6	<b>Management Elective</b>		<b>- To be defined -</b>	24 hrs	3
S6	<b>Seminar</b>		<b>Business Game</b>	3-day seminar	1.5
S6	<b>Language course</b>		<b>French as a foreign language</b>	18	1.5

# Contacts

---

**Head of the International  
Relations Office**

**Marina Lecomte**

**Head of Bachelor  
international  
partnerships and  
Development**

**Emmanuelle Khvatov**

Contact:

**[bachelor.international.programs@escp.eu](mailto:bachelor.international.programs@escp.eu)**

AT A GLANCE

## ESCP BUSINESS SCHOOL

**6**

**urban campuses :**  
Berlin, London, Madrid,  
Paris, Turin and Warsaw and  
a branch campus in Dubai

**1<sup>st</sup>**

**Business School in the world** (est. 1819)

**Multi-accredited**

AACSB, EQUIS, EFMD MBA, EFMD EMBA,  
5 European Higher Ed standards

A full

**portfolio**

**Bachelor, Masters,  
MBAs, PhDs and  
Executive Education**

**11,500**

**students** in degree  
programmes  
representing  
**140 countries**

**220**

**research-active  
professors**  
representing  
45 nationalities

**150**

**academic alliances  
in Europe  
and the world**  
in 50 countries



**Bachelor in Management  
(BSc)**

Introduction

General information

BSc Programme

Network & Career

After graduation

FAQ

Contact us